

BERLIN-BRANDENBURG: A 10-YEAR COAL EXIT & ENERGY TRANSITION STRATEGY

 **UNSW** Australia | Built Environment
 **LISD** LIECHTENSTEIN INSTITUTE FOR STRATEGIC DEVELOPMENT

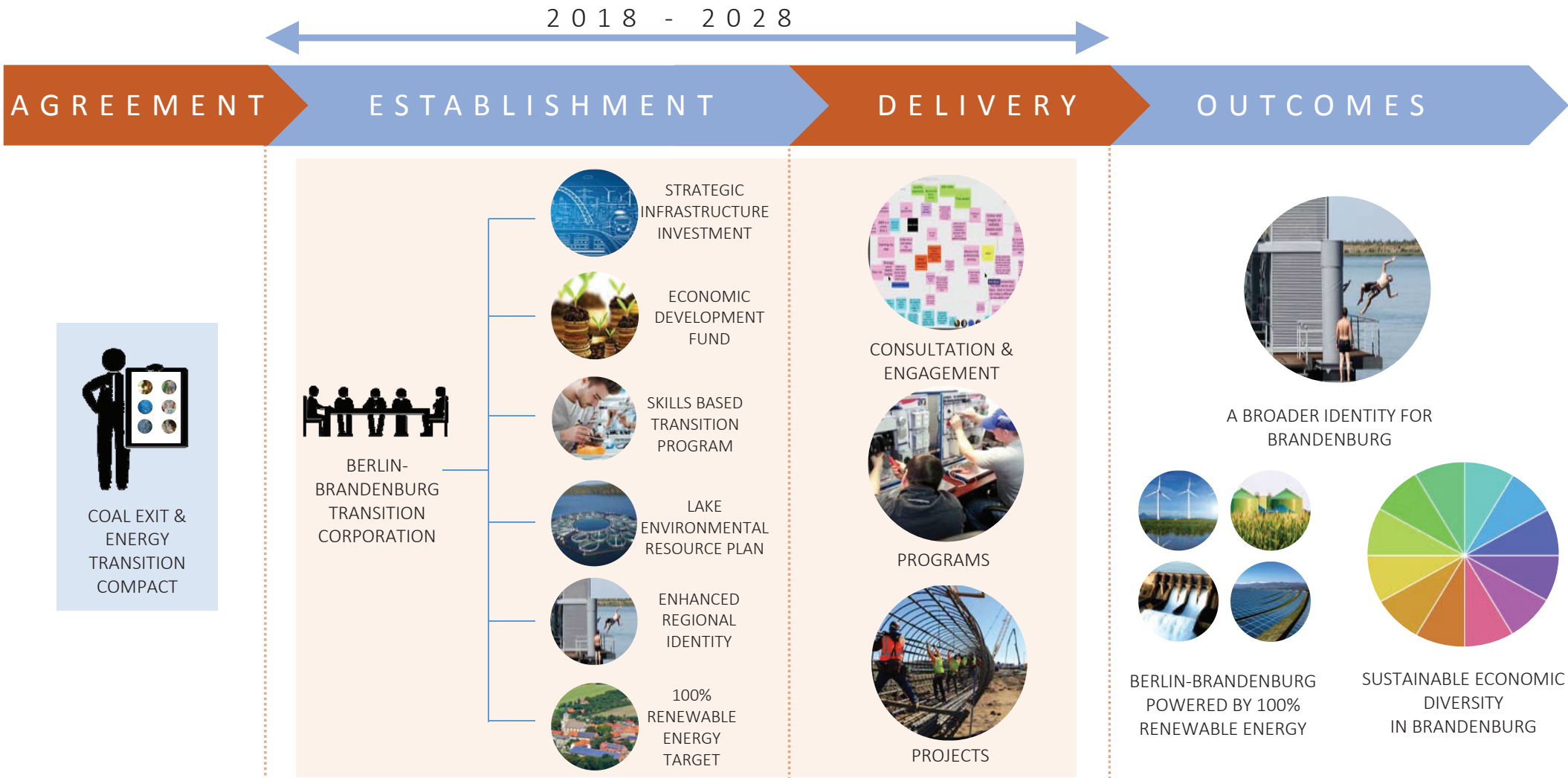
Develop an environmentally, socially, economically, fiscally and spatially relevant Coal Exit and Metropolitan Energy Transition (CEMET) Strategy for Greater Berlin and Brandenburg.
(LISD CHALLENGE TO UNSW)



The state of Brandenburg contains some of Europe’s largest coal mines and coal-fired power plants which have traditionally provided for the energy needs of both Brandenburg and Berlin. Since the re-unification of Germany in the 1990s, many coal mines and coal fired power plants have closed, and the state is transitioning to the production and use of renewable energy. However, an impediment to this continued transition is the lack of a clear direction from all levels of government regarding a timescale for an exit from coal.

STRATEGY OVERVIEW

This is a 10-year plan with a suite of policy recommendations to support and accelerate Berlin-Brandenburg’s transition to renewable energy, broaden the economic base of the region, empower the community and inspire confidence in its regional identity. To have effect, the 10-year plan requires commitment from all levels of government to publically and jointly commit to 100% renewable energy for the region through a Compact, and administration by a new Berlin-Brandenburg Transition Corporation. Implementation of the 10-year plan will require new finance and funding arrangements to be put in place. Tax Increment Financing is recommended for initial funding of these policies, with future increases in business, property and income tax revenues offsetting the initial government outlay over time.



STRATEGIC INFRASTRUCTURE INVESTMENT

- Prioritise and invest in strategic infrastructure
- Lobby for EU and national government funds
- Involve local communities and industry
- Act as a catalyst for future investment and growth



LUSATIA ECONOMIC DEVELOPMENT FUND

- Provide seed funding for projects that support innovation and growth
- Broaden the economic base of the region
- Foster entrepreneurship at the local level
- Enhance community quality of life



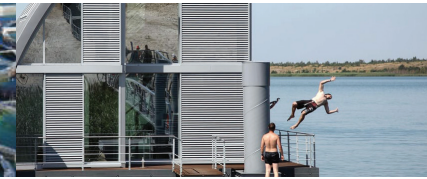
SKILLS-BASED TRANSITION PROGRAM

- Guarantee the employment future of coal workers through a skills-based transition program.
- Use the RAG-Siftung (from Ruhr and Saar regions) as precedent to establish a Foundation.
- Work with Innovations region Lausitz to map industry and jobs growth opportunities.



LAKE ENVIRONMENTAL RESOURCE PLAN

- Build on aesthetic and recreational opportunities of artificial lakes through scientific research and development
- Advance water-based renewable energy technology and aquatic biodiversity through living ‘lake labs’
- Position Lusatia as a global leader in mine site rehabilitation



ENHANCED REGIONAL IDENTITY

- Establish a new regional identity built on community pride
- Diversify the economy through greater investment in tourism.
- Community consultation must be at the heart of this strategy to capture the idea of ‘heimat’, which underpins the German concept of home.



100% RENEWABLE ENERGY TARGET

- Commit to a 100% RET by 2025
- Provide certainty for investment in renewable energy technology.
- Include targets across interim years, sharing responsibility across successive governments, breaking the short-term election commitment cycle.